

UTAH INTERAGENCY FIRE

Central Utah Interagency News Release



CONTACT: Kayli Guild
385-377-0336, kayliguild@utah.gov
Additional agency contacts below

RELEASE DATE: July 11, 2024

Central Utah to implement fire restrictions

RICHFIELD, Utah - Due to rapidly increasing fire danger and recent wildfire activity, interagency fire managers are implementing Stage 1 Fire Restrictions beginning July 12 at 12:01 a.m. on all federal, unincorporated Private, and State lands in Millard, Sevier, Wayne, Piute, Garfield, Juab (excluding Uinta-Wasatch-Cache National Forest), Sanpete (excluding Manti-La Sal National Forest), and Beaver counties (including Fishlake National Forest, Beaver Ranger District). Incorporated cities and towns are not included. Please contact your local fire department or County Fire Warden for specific private land fire restrictions.

"Fire danger is rapidly increasing daily in central Utah. Hot and dry weather conditions are expected to continue through July," said **Color Country District, Bureau of Land Management Fire Management Officer Josh Tibbetts**. "Recent wildfires have grown rapidly on windy days and have the potential to threaten our communities and public lands. Preventing human-caused wildfires is priority for all land management agencies right now."

While Stage 1 Fire Restrictions are in effect, the following acts are prohibited:

- No campfires or open fires outside of agency improved and maintained campgrounds and homesites in central Utah. Running water is required at cabins or homesites on unincorporated private land. Devices fueled by liquid petroleum are allowed.
- No discharging of fireworks or other pyrotechnic devices outside of incorporated city limits or on public lands (city-specific restrictions may apply). Fireworks are always prohibited on all federal lands.
- No shooting of exploding targets or tracer ammunition.
- No cutting, grinding, or welding of metal in areas of dry vegetation. This includes acetylene torches.
- No use of equipment without a working and properly maintained spark arrestor (if required).

- No smoking near vegetation or outside of a developed recreation site, personal vehicle, or building.

Please be aware that fire restrictions will be slightly different among agencies and these restrictions do not apply to incorporated cities. Please check the specific fire restrictions with the respective land management agency before visiting.

Local, state, and federal fire officials urge Utahns to use their 'Fire Sense' to help prevent unwanted wildfires. 'Fire Sense' is an interagency fire awareness campaign that was implemented in 2021 to increase public knowledge on how to prevent wildland fires. For more information on preventing unwanted human caused wildfires, agency-specific restrictions, and reference maps, visit www.utahfiresense.org, and www.utahfireinfo.gov or follow us on X (formerly known as Twitter), [@UtahWildfire](https://twitter.com/UtahWildfire).

-CUIFM-

Agency Media Contacts:

Kayli Guild, Utah Division of Forestry, Fire and State Lands, 385-377-0336

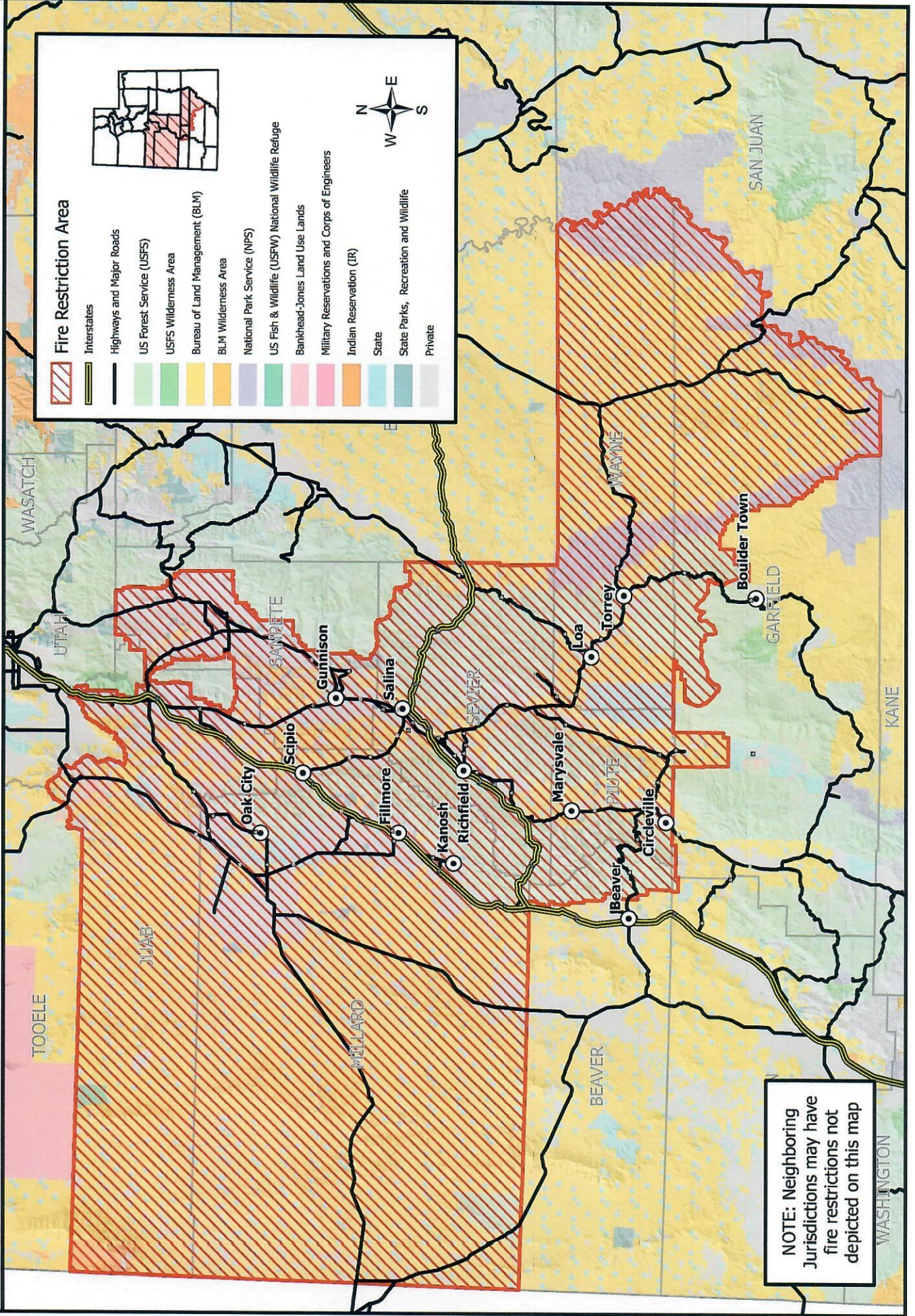
Jacqueline Russell, Color Country District, Bureau of Land Management, 435-691-8957

Ashley Snipes, West Desert District, Bureau of Land Management, 801-320-8255

Naomi Gordon, Fishlake National Forest, USDA Forest Service, 435-896-1070

Central Utah Fire Restrictions

Stage 1 Fire Restrictions - July 12, 2024



Fire Restriction Area

- Interstates
- Highways and Major Roads
- US Forest Service (USFS)
- USFS Wilderness Area
- Bureau of Land Management (BLM)
- BLM Wilderness Area
- National Park Service (NPS)
- US Fish & Wildlife (USFWS) National Wildlife Refuge
- Bankhead-Jones Land Use Lands
- Military Reservations and Corps of Engineers
- Indian Reservation (IR)
- State
- State Parks, Recreation and Wildlife
- Private

NOTE: Neighboring Jurisdictions may have fire restrictions not depicted on this map